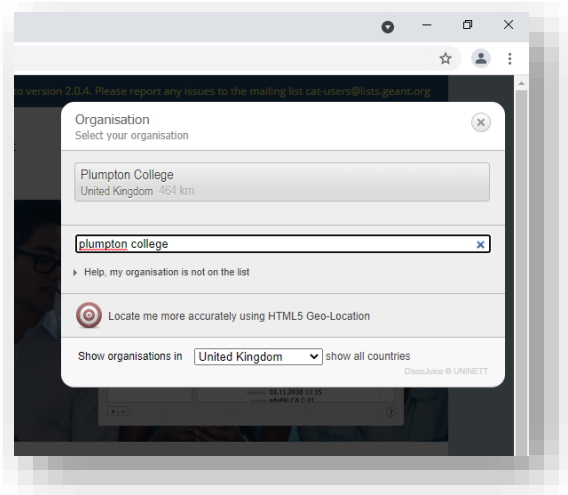
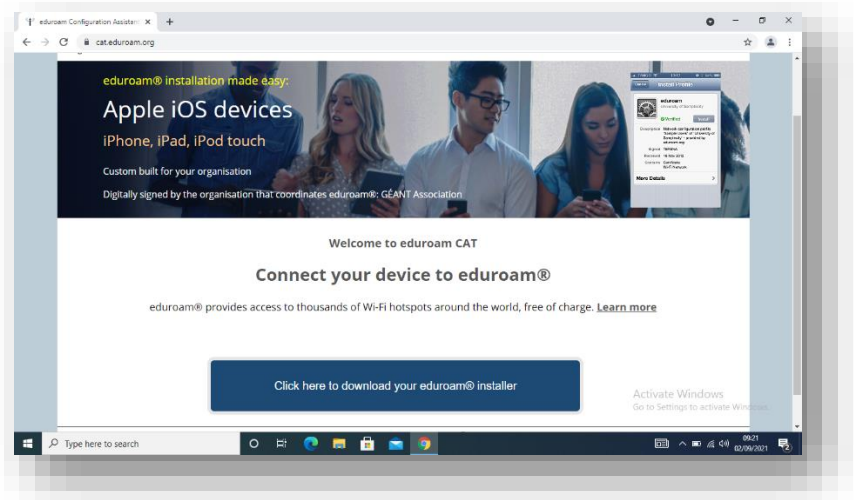


Installing Eduroam on a Windows Device

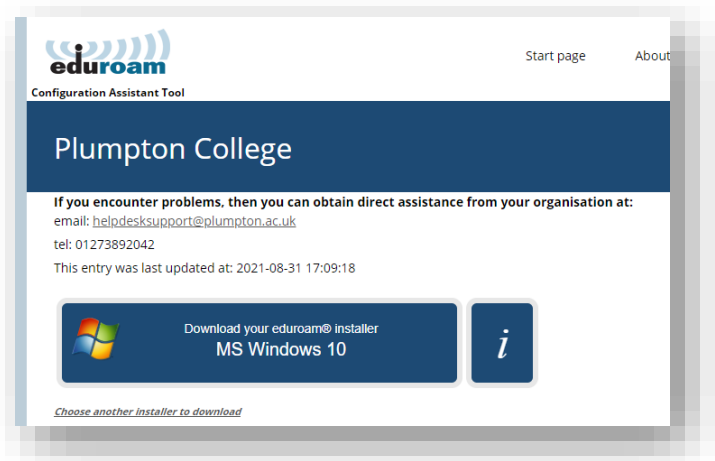
With our new WiFi networks (available across the whole site), you can connect your device to our WiFi network before you have even come on-site – to on-board your Windows device to our WiFi remotely, please follow the instructions below.

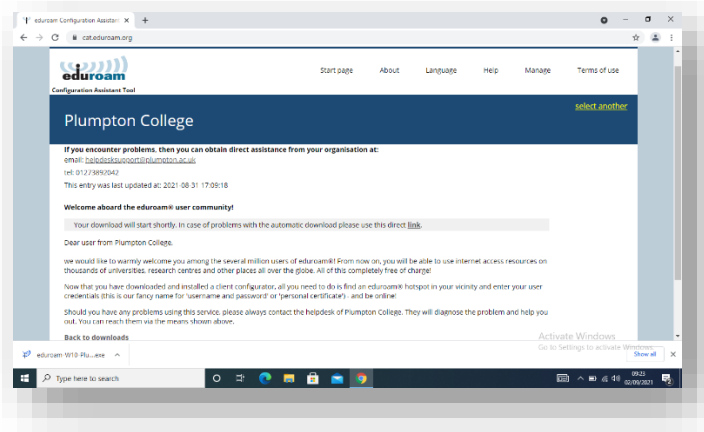
Open a web browser and search for the website **cat.eduroam.org** – you should arrive at the Eduroam website.



Once on the Eduroam website, tap the blue **Click here to download your Eduroam installer** button, a search bar will appear. Type Plumpton College into that search bar and you should see the College listed above the search bar. Tap on the College.

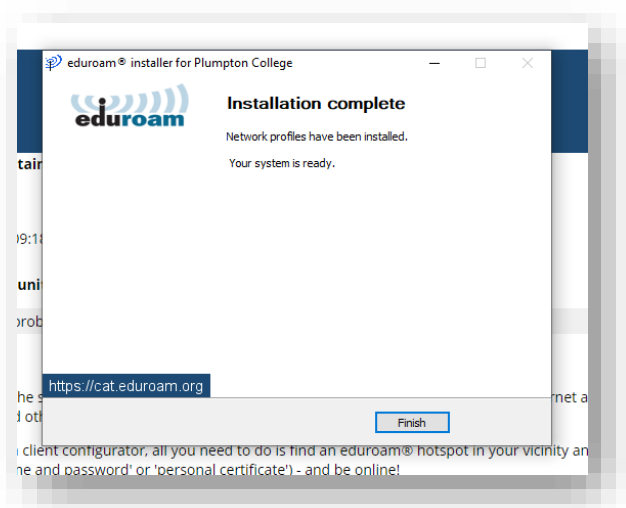
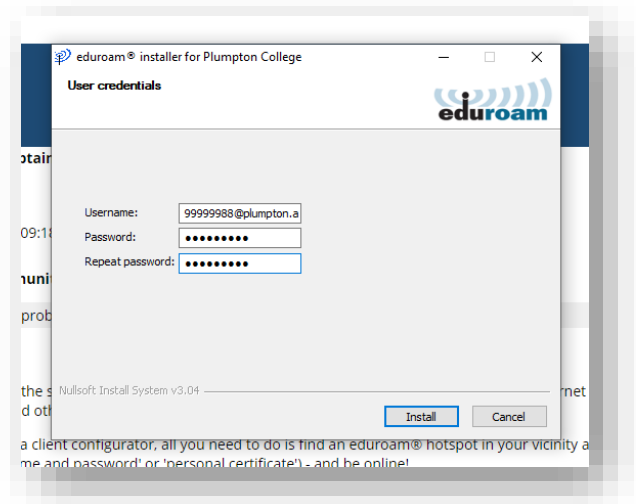
You should be met with the following screen once you have tapped on Plumpton College. The website will auto-detect what installer you need for Eduroam to work on your device and will list it in the blue box (in this case – MS Windows 10). If you tap this, you will be sent to the installation page.





The download should start automatically and will pop up at the bottom of your screen. Once it is complete, tap on it and it will open up the Eduroam installer.

Follow the instructions on the page and when prompted, enter your college login details. Your login details will be your Plumpton email address (your student number followed by @plumpton.ac.uk) and your password will be the same password that you use for college systems (your date of birth by default for new students).



Continue the instructions on screen until the installer has finished. Once it has finished you should be able to connect to the College's eduroam WiFi network when on-site.